

CTE Career Pathways



Program vision » The Career and Technical Education (CTE) program provides educational opportunities to ALL students to explore their passions and develop professional skills to open pathways of opportunities. Students can explore six career pathways in all our high schools, participate in apprenticeships, internships, earn college credit, and industry (professional) certifications.



**Engineering &
Advanced
Manufacturing**



**Energy &
Sustainability**



**Health Sciences &
Medical Careers**



**Communication &
Information
Technology**



**Education
Careers**



**Business &
Professional
Services**



CTE Career Pathway Readiness Opportunities



Health Sciences & Medical Careers



High school courses

Career and Technical Education (CTE) courses integrate rigor in academics, and career and leadership skills.

Industry certifications (professional cert) are noted with*
Fundamentals of Patient Care Certificate: Nursing Assistant
(21-22 @ EHS only)

Dual credit (college credit) courses are noted with **

Core Courses	Exploratory Courses	Advanced Courses	Skill Center Courses
Algebra 1 and 2	Anatomy and Physiology **	Fundamentals of Patient Care @ EHS*	Pre-Nursing (NAC)
Biology and the Environment	Biotechnology	AP BIO	Medical Terminology
Chemistry	Health Careers & Medical Terminology**	AP CHEM	
Family Health	Nutrition and Wellness	AP Seminar	
	Nutrition and Food Prep I, II	AP Physics	
	Sports Medicine 1, 2 and 3	AP Statistics	
		AP Psychology	



Career and Technical Student Organizations (CTSOs)

CTSOs are part of all CTE courses. Students can explore careers, and practice their skills through competition at local, regional and national levels through after school programs.

- Health Occupations Students of America (HOSA)
- Skills USA
- Washington Career Technical Sports Medicine Association (WCTSMA)



Work based learning

These are learning experiences that provide career guidance and exploration: job shadows, internships, apprenticeships, community speakers, field trips and jobs.

- Medical Careers Internship
- Sports Medicine Internship

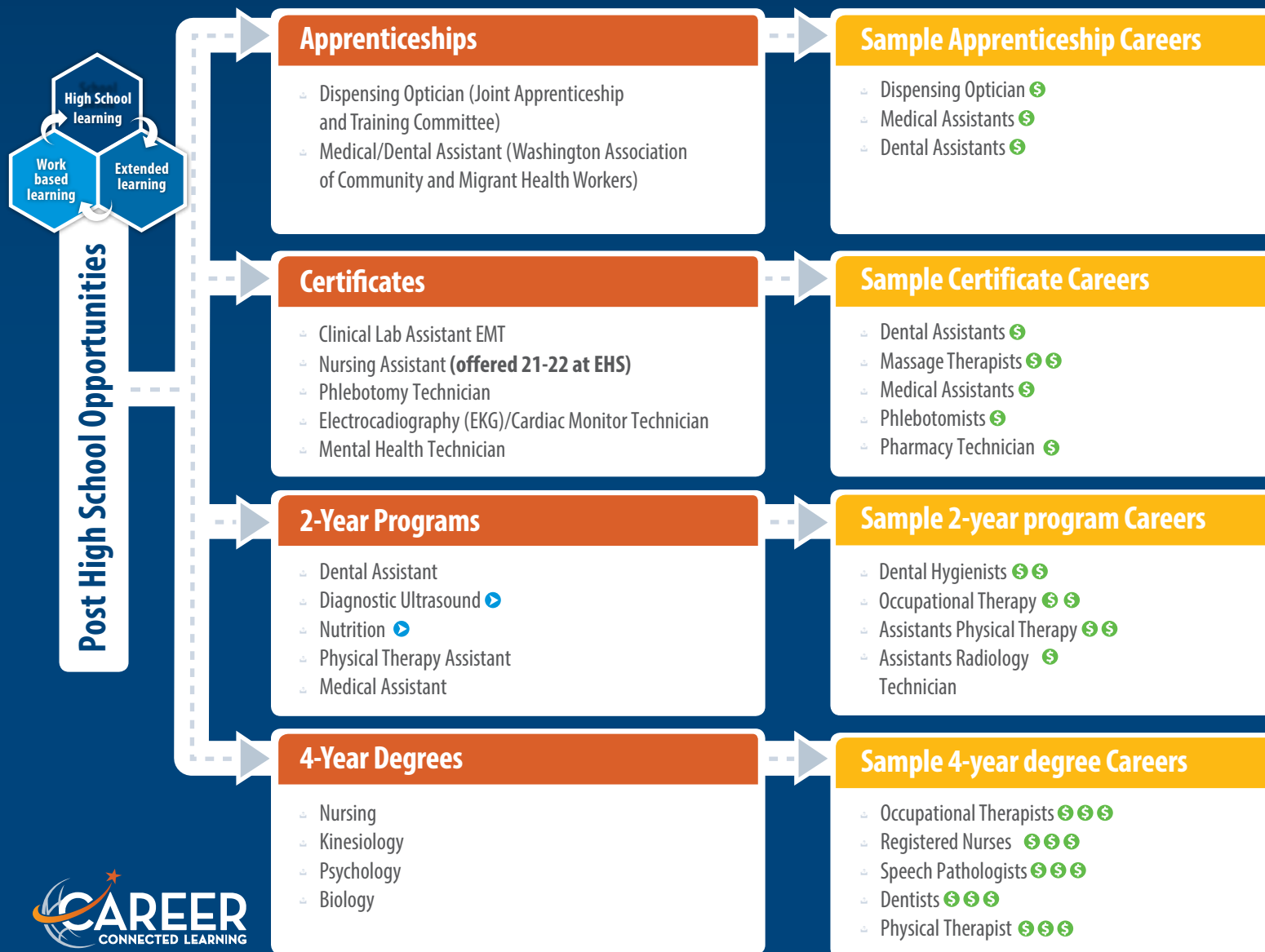


For more information regarding Everett Public Schools Career Pathways, please contact your high school's career specialist and counselors. Visit the CTE web page on: Everettsd.org

Document updated: Dec 2020

Pathways to Health Sciences & Medical Careers

Health and medical careers are all about helping others live healthy and productive lives. This field is for you, if you want to work in the medical field from mental health to research, and sports medicine.



SKILLS

- Social perception
- Service orientation
- Strong math & science skills
- Good decision-making
- Active listening

TRANSFER

▶ = Transfer degree only

SALARIES

\$ = Max \$25/hr
 \$ \$ = Max \$26-40/hr
 \$ \$ \$ = Max > \$40/hr

For more information regarding Everett Public Schools Career Pathways, please contact your high school's career specialist and counselors.

Visit the CTE web page on: Everettsd.org

Document updated: Dec. 2020

CTE Career Pathway Readiness Opportunities



Engineering & Advanced Manufacturing



High school courses

Career and Technical Education (CTE) courses integrate rigor in academics, and career and leadership skills.

Industry certifications (professional cert) are noted with*
- Foundations of Manufacturing Certificates: Core Plus, OSHA, NC3

Dual credit (college credit) courses are noted with **

Core Courses

Algebra 1 and 2

Geometry

Physics in the Universe

Exploratory Courses

CAD and 3D Printing (MS) - HS credit

Foundations of Manufacturing @CHS*

Engineering Your World

Robotics Technology **

Robotics & Mechatronics **

Astronomy and Aerospace Engineering

Technical Theatre 1, 2, 3

Advanced Courses

AP Physics

AP Capstone: Research in Science
and Engineering

Skill Center Courses

Electric Engineering Technology

Precision Machining

Welding and Metal Fabrication



Career and Technical Student Organizations (CTSOs)

CTSOs are part of all CTE courses. Students can explore careers, and practice their skills through competition at local, regional and national levels through after school programs.

- ✈ Technology Student Association (TSA)
- ✈ Robotics (FRC/FTC/FLL/FLL jr/Drone League)
- ✈ SkillsUSA
- ✈ TARC - Team America Rocketry
- ✈ Washington Thespian



Work based learning

These are learning experiences that provide career guidance and exploration: job shadows, internships, apprenticeships, community speakers, field trips and jobs.

- ✈ Engineering & Manufacturing Internship
- ✈ Aerospace Joint Apprenticeship Committee
(AJAC - Youth Apprenticeship)



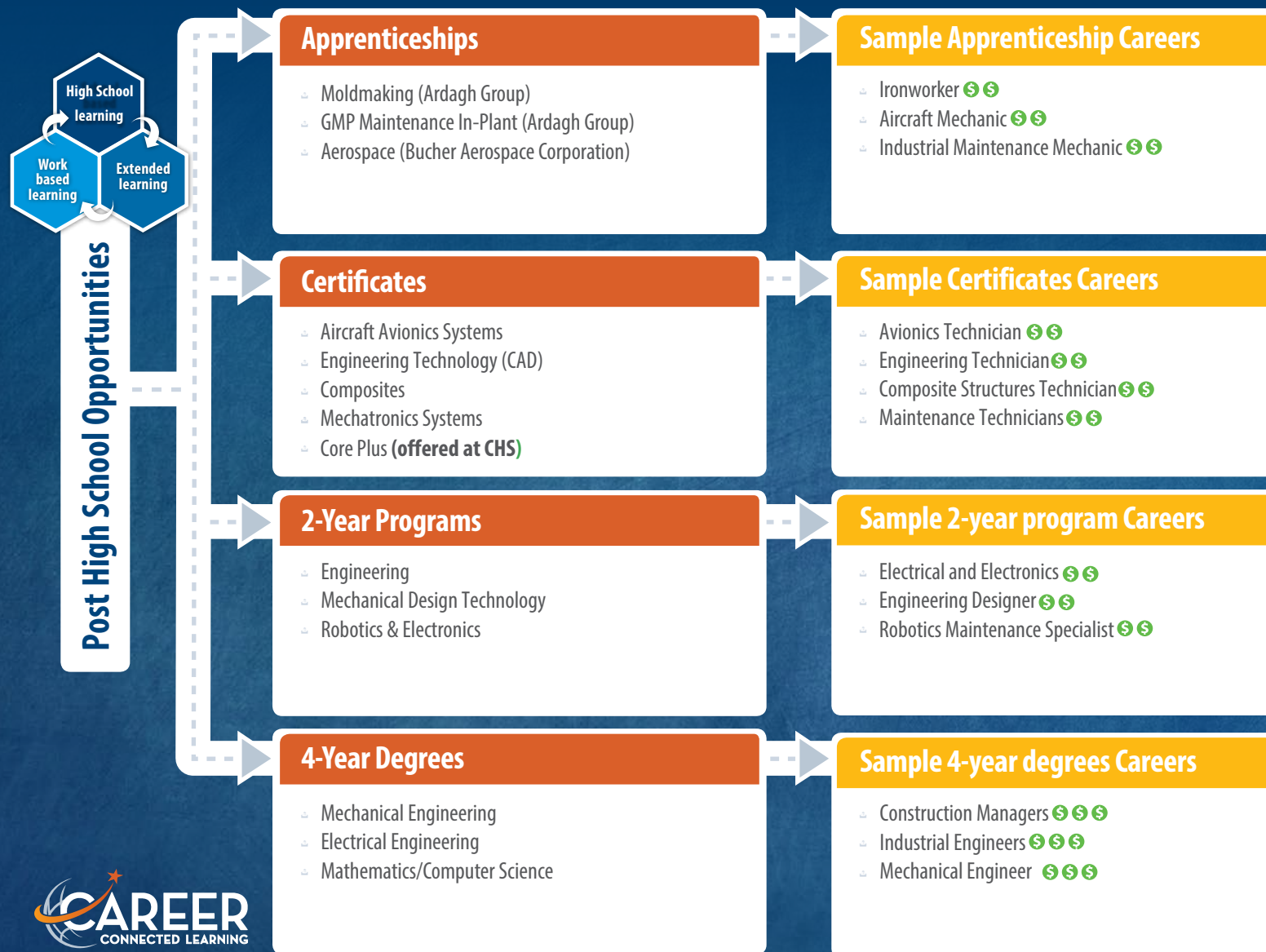
For more information regarding Everett Public Schools Career Pathways, please contact your high school's career specialist and counselors. Visit the CTE web page on: Everettsd.org

Document updated: Dec. 2020

Pathways to Engineering & Advanced Manufacturing Careers



Careers in engineering and advanced manufacturing include scientists, engineers, technicians, production and support workers. This pathway is for you if you like working with your hands, creative, want to design, work with robotics and technology.



SKILLS

- Troubleshooting
- Good writing skills
- Hands-on work
- Identifying problems
- Active listening

TRANSFER

▶ = Transfer degree only

SALARIES

\$ = Max \$25/hr
 \$ \$ = Max \$26-40/hr
 \$ \$ \$ = Max > \$40/hr

For more information regarding Everett Public Schools Career Pathways, please contact your high school's career specialist and counselors.

Visit the CTE web page on: Everettsd.org

Document updated: Dec. 2020

CTE Career Pathway Readiness Opportunities



Communication & Information Technology



High school courses

Career and Technical Education (CTE) courses integrate rigor in academics, and career and leadership skills.

Industry certifications (professional cert) are noted with*
- Cybersecurity Certificate: CompTia and Security Plus

Dual credit (college credit) courses are noted with **

Core Courses

Intro to Art
English 1, 2 and 3
Algebra 1 and 2

Exploratory Courses

IT Fundamentals @JHS
Computer Sci Through Graphics & Animation
Digital Photography 1, 2
Graphic Design 1**, 2** and 3
Publications 1, 2 and 3
Video Production 1, 2, and 3
Web Design**

Advanced Courses

Cybersecurity @JHS*
AP Computer Science Principles
AP Computer Science A
AP Studio Art (2D and 3D drawing)

Skill Center Courses

DigiPen Art & Animation
Video Game Design



Career and Technical Student Organizations (CTSOs)

CTSOs are part of all CTE courses. Students can explore careers, and practice their skills through competition at local, regional and national levels through after school programs.

- Technology Student Association (TSA)
- Skills USA
- Robotics



Work based learning

These are learning experiences that provide career guidance and exploration: job shadows, internships, apprenticeships, community speakers, field trips and jobs.

- Information and Communication Technology Internship

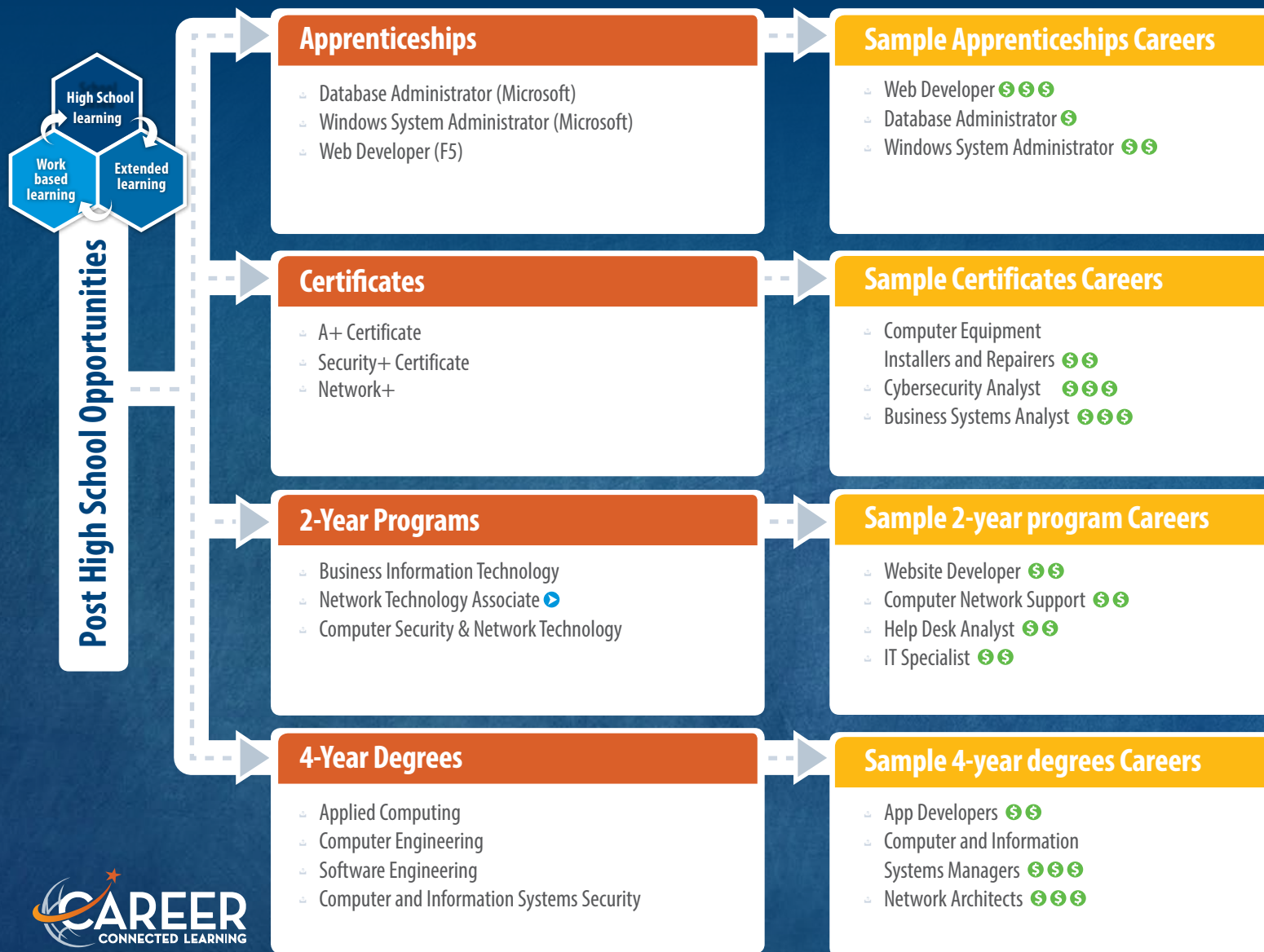


For more information regarding Everett Public Schools Career Pathways, please contact your high school's career specialist and counselors. Visit the CTE web page on: Everettsd.org

Document updated: Dec. 2020

Pathways to Communication & Information Technology Careers

Information and communication technology jobs focus on creativity and problem solving skills to improve people's daily lives through digital technology. This path is for you if you like working with digital tools, creating programs, problem solving systems, and digital media/art.



SKILLS

- Passion for technology
- Good writing skills
- Identifying problems
- Good decision-making
- Active listening

TRANSFER

▶ = Transfer degree only

SALARIES

\$ = Max \$25/hr
 \$\$ = Max \$26-40/hr
 \$\$\$ = Max > \$40/hr

For more information regarding Everett Public Schools Career Pathways, please contact your high school's career specialist and counselors.

Visit the CTE web page on: Everettsd.org

Document updated: Dec. 2020

CTE Career Pathway Readiness Opportunities



Energy & Sustainability



High School courses

Career and Technical Education (CTE) courses integrate rigor in academics, and career and leadership skills.

Industry certifications (professional cert) are noted with*

Dual credit (college credit) courses are noted with **

Core Courses

Biology and the Environment

Chemistry

Exploratory Courses

Advanced Courses

AP Environmental Science (9th-12th)

AP Biology

AP Chemistry

AP Capstone: Research in Science and Engineering

Skill Center Courses



Career and Technical Student Organizations (CTSOs)

CTSOs are part of all CTE courses. Students can explore careers, and practice their skills through competition at local, regional and national levels through after school programs.

- 🏢 Technology Student Association (TSA)
- 🏢 Future Farmers of America (FFA)
- 🏢 Environthon - Snohomish County



Work based learning

These are learning experiences that provide career guidance and exploration: job shadows, internships, apprenticeships, community speakers, field trips and jobs.

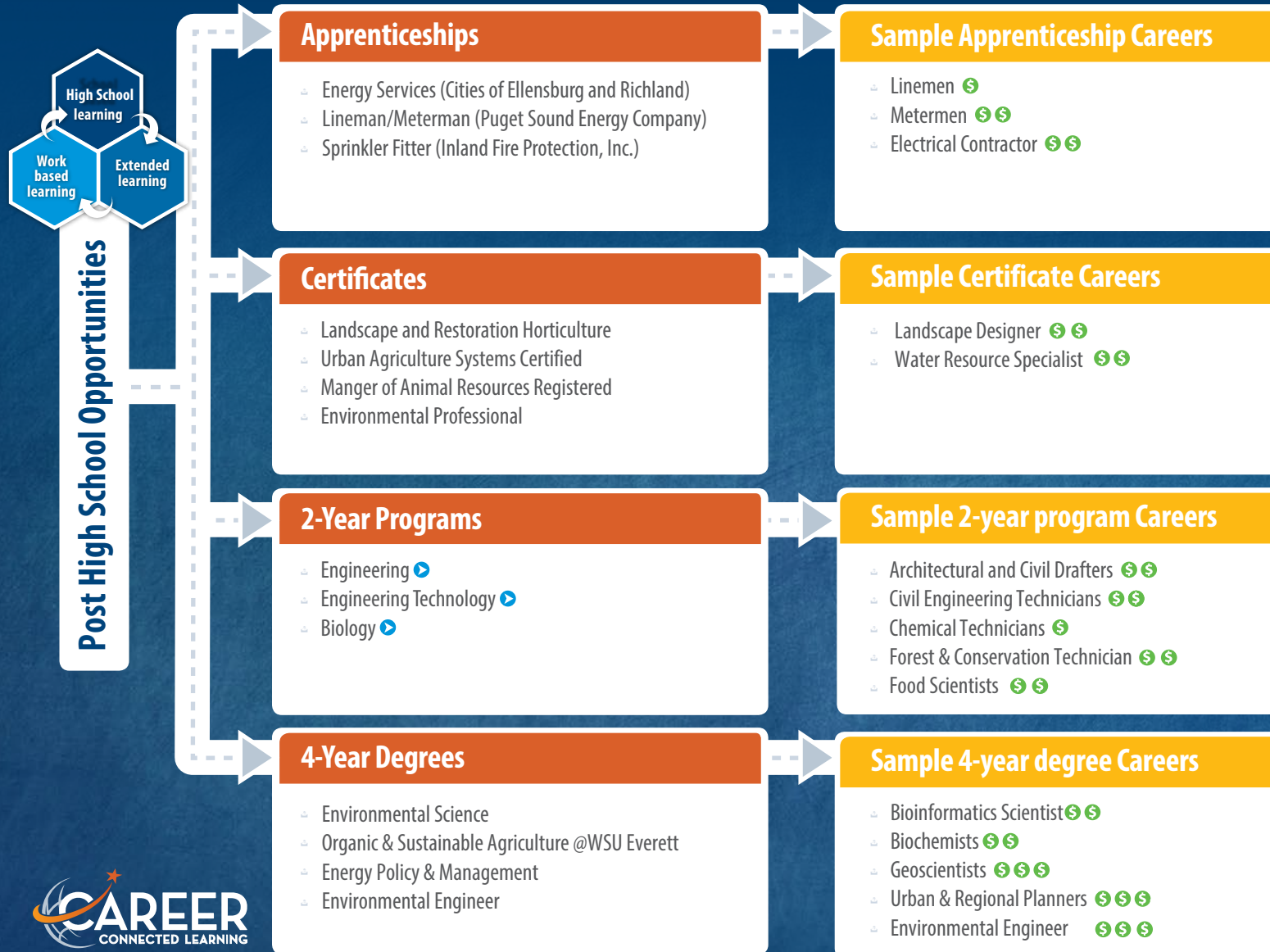
- 🏢 Energy and Sustainability Internship

For more information regarding Everett Public Schools Career Pathways, please contact your high school's career specialist and counselors. Visit the CTE web page on: Everettsd.org

Document updated: Dec. 2020

Pathways to Energy & Sustainability Careers

The Energy and Sustainability pathway will help you understand environmental management, prepare you for careers that promote environmentally friendly practices, energy production, research and more. This path is for you, if you want to make a positive impact on the environment, people's quality of life and future generations.



SKILLS

- Planning skills
- Identifying problems
- Strong math & science skills
- Strong reading skills
- Interest in environmental
- Interest in environmental science

TRANSFER

▶ = Transfer degree only

SALARIES

\$ = Max \$25/hr
 \$\$ = Max \$26-40/hr
 \$\$\$ = Max > \$40/hr

For more information regarding Everett Public Schools Career Pathways, please contact your high school's career specialist and counselors.

Visit the CTE web page on: Everettsd.org

Document updated: Dec. 2020

CTE Career Pathway Readiness Opportunities



Education Careers



High School courses

Career and Technical Education (CTE) courses integrate rigor in academics, and career and leadership skills.

Industry certifications (professional cert) are noted with*

Dual credit (college credit) courses are noted with **

Core Courses

Exploratory Courses

Advanced Courses

Skill Center Courses

Childhood Development

Intro to Education

Careers in Education



Career and Technical Student Organizations (CTSOs)

CTSOs are part of all CTE courses. Students can explore careers, and practice their skills through competition at local, regional and national levels through after school programs.

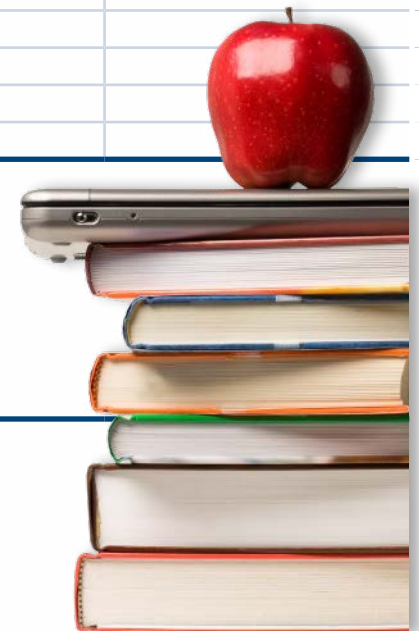
- 🏠 Educators Rising
- 🏠 Family, Career and Community Leaders of America (FCCLA)



Work based learning

These are learning experiences that provide career guidance and exploration: job shadows, internships, apprenticeships, community speakers, field trips and jobs.

- 🏠 Educational Studies Internship

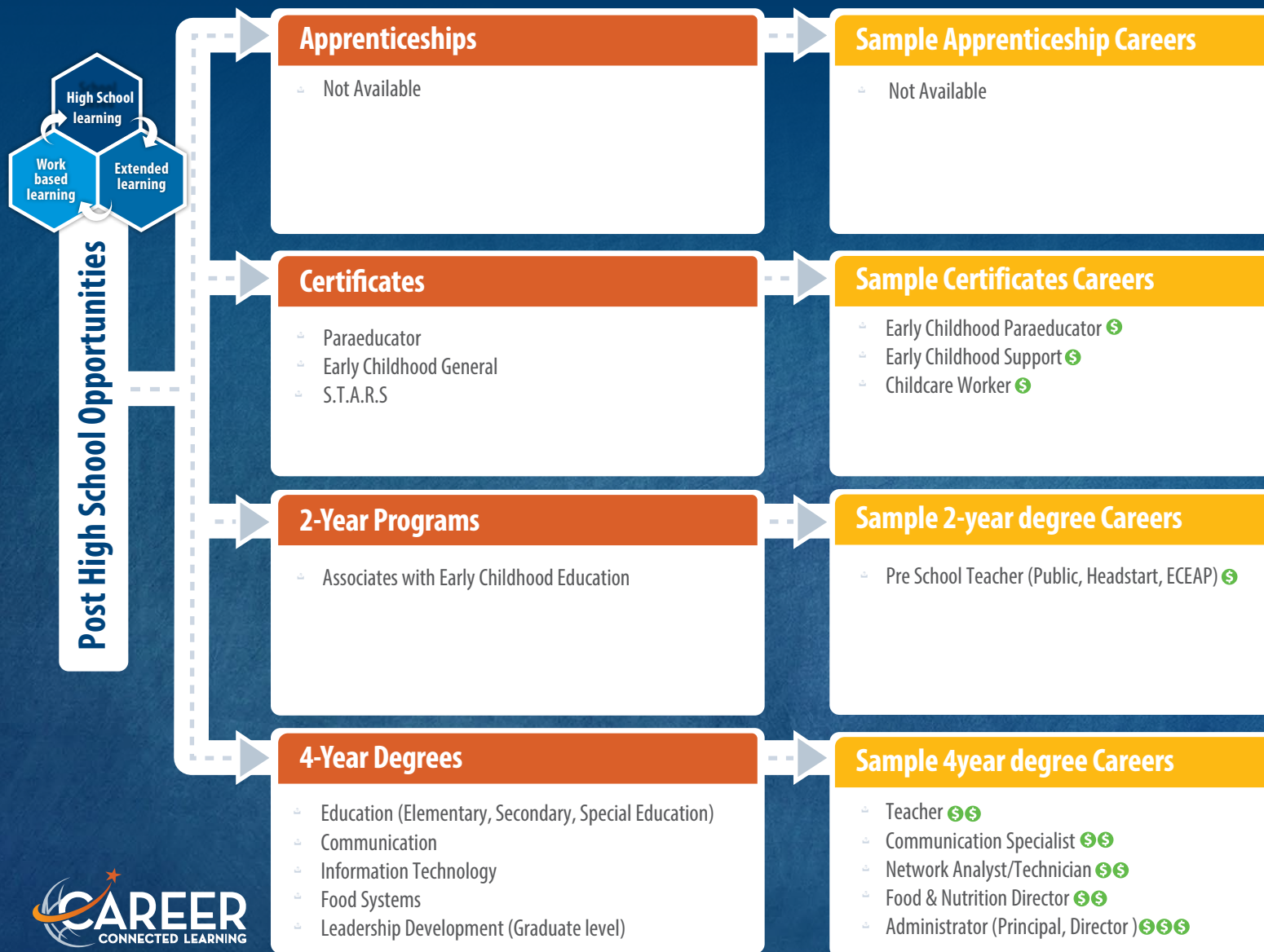


For more information regarding Everett Public Schools Career Pathways, please contact your high school's career specialist and counselors. Visit the CTE web page on: Everettsd.org

Document updated: Dec. 2020

Pathways to Education Careers

Careers in education can impact students of all ages. The demand for teachers, paraeducators, counselors, and administrators is high, especially for those with certification in areas including special education, science, math, and English language learners.



SKILLS

- Active listening
- Instructing
- Speaking
- Juggling priorities
- Sensitivity to problems
- Monitoring

TRANSFER

➡ = Transfer degree only

SALARIES

\$ = Max \$25/hr
 \$\$ = Max \$26-40/hr
 \$\$\$ = Max > \$40/hr

For more information regarding Everett Public Schools Career Pathways, please contact your high school's career specialist and counselors can review this document with students and families.

Document updated: Dec. 2020

CTE Career Pathway Readiness Opportunities



Business & Professional Services



High School courses

Career and Technical Education (CTE) courses integrate rigor in academics, and career and leadership skills.

Industry certifications (professional cert) are noted with*

Dual credit (college credit) courses are noted with **

Core Courses	Exploratory Courses	Advanced Courses	Skill Center Courses
Algebra 1 and 2	Foundations of Business & Marketing	AP Macroeconomics	Fashion Merchandising
	Intro to Business Law	AP Microeconomics	Entrepreneurship
	Business Law	Business Operations	Personal Finance
	Accounting 1, 2**	Entrepreneurship**	Cosmotology
	Business & Finance		
	Social Media Marketing		
	Economics		



Career and Technical Student Organizations (CTSOs)

CTSOs are part of all CTE courses. Students can explore careers, and practice their skills through competition at local, regional and national levels through after school programs.

- DECA
- Future Business Leaders of America (FBLA)



Work based learning

These are learning experiences that provide career guidance and exploration: job shadows, internships, apprenticeships, community speakers, field trips and jobs.

- Business & Professional Services Internship

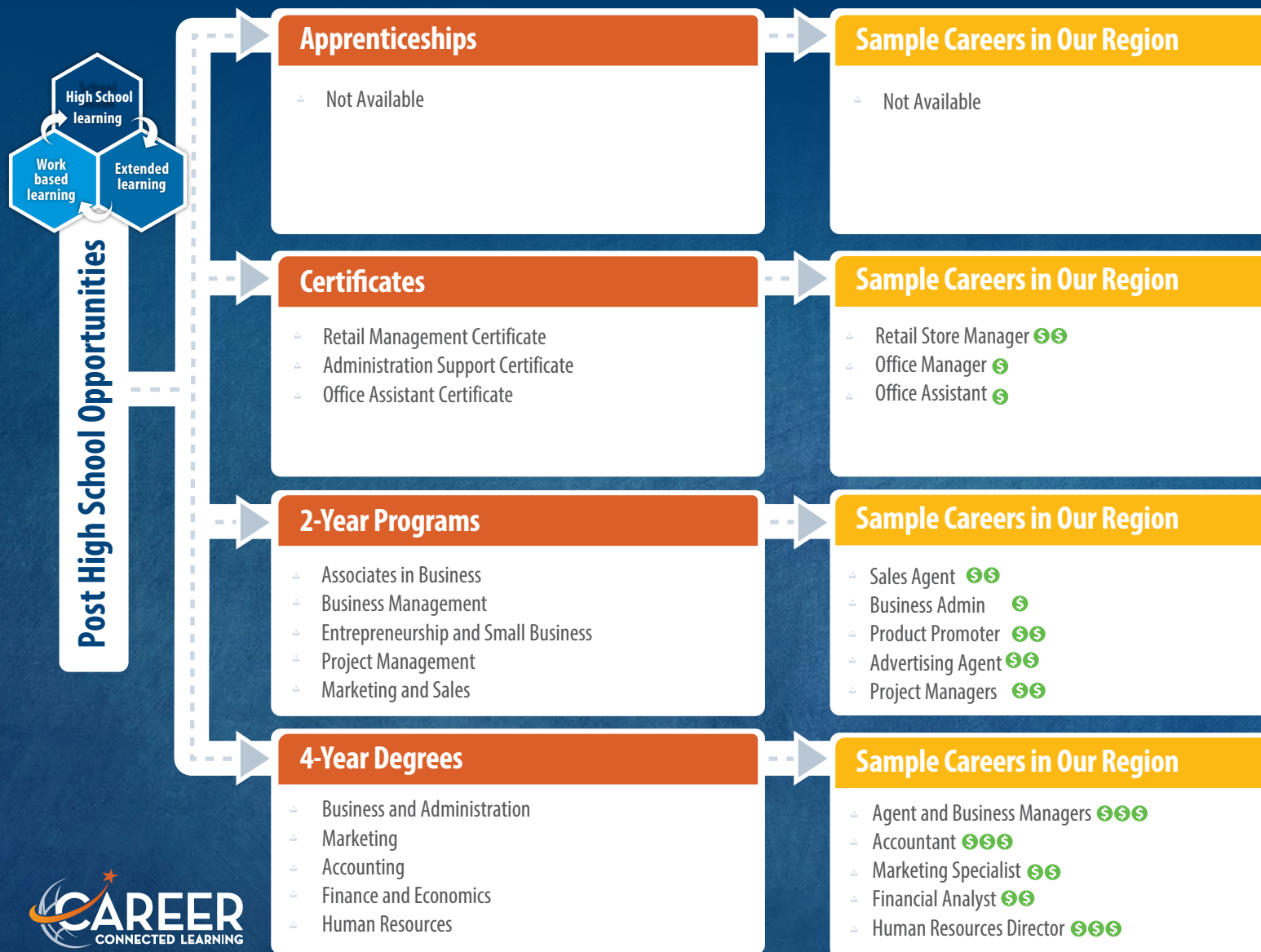


For more information regarding Everett Public Schools Career Pathways, please contact our high school's career specialist and counselors. Visit the CTE web page on: Everettsd.org

Document updated: Dec. 2020

Pathways to Business & Professional Services

Business careers cover variety of industries including finance, information technology, marketing and retail. Depending on an individual's interests and skills careers can be found at all levels, from entry level to management.



SKILLS

- Active listening
- Identifying problems
- Seeing details up close
- Organizing information
- Communicate in writing

TRANSFER

▶ = Transfer degree only

SALARIES

\$ = Max \$25/hr
 \$\$ = Max \$26-40/hr
 \$\$\$ = Max > \$40/hr

For more information regarding Everett Public Schools Career Pathways, please contact your high school's career specialist and counselors.

Visit the CTE web page on: Everettsd.org

Document updated: Dec. 2020